



MEDVALLÉE
MONTPELLIER

Inventing **the future here**





MedVallée is both an ambition and a strategy to build exposure for Montpellier as a **worldwide hub for excellence in global health.**

It is also the meeting point between our past and our future: Montpellier's 800 years of history with its faculty of medicine clearly laid the foundation for our territory in terms of excellence in knowledge, research, and innovation in the health field at an international level.

Feed, Care, Protect. Those are the great challenges of tomorrow, as well as the motto for MedVallée, along with the Montpellier University of Excellence, one of the world's recognized leaders in ecology: #3 in the Shanghai global academic ranking in 2022!

With MedVallée, we are taking action and uniting all the economic, academic, and research players involved at the crossroads of our territory's three excellence sectors – health, food, and the environment – with a powerful and highly visible community.

MedVallée therefore contributes to our country's economic, health, and food sovereignty, while supporting openness to the world through strategic international collaborations.

Michaël Delafosse
Mayor of Montpellier / President of Montpellier Méditerranée Métropole



"**Balancing employment and ecology** means creating an environment that is favorable for developing the companies creating tomorrow's jobs. It also involves **preparing the future for our youth**, while building new regional sectors that are innovative and inclusive. The regional level is the right scale for reestablishing our country's economic sovereignty. As a founding member, I fully support, **the MedVallée initiative, which will position Montpellier Métropole as a hub for worldwide excellence in the global health sector**".

Carole Delga
President of the Occitanie / Pyrénées - Méditerranée Region



RÉPUBLIQUE FRANÇAISE
Liberté
Égalité
Fraternité

"The pandemic that affected every country in the world must serve **as a signal about our way of thinking and behavior.** More than ever, our action must **balance human health, animal health, and planetary health** in order to prevent future pandemics and other catastrophes. France is taking this issue to the highest level on the international stage with its partners. The country's ambition is to ensure that the concept of "One Health" becomes the template for our thinking and actions for the future. **The biological chain that links the health of people, animals, and ecosystems must become the focus of global study among public and private stakeholders,** a source for experimentation anchored in territories and led by citizens, and a call for international cooperation among countries, universities, and hospitals.

Montpellier is already well known for its forward-looking vision in the fields of health, the environment, and agriculture. The French State, Occitanie Region, and Montpellier Métropole are committed to the **MedVallée project to build even greater synergy** and so that it becomes **a worldwide reference in the way we build our future.**"

Hugues Moutouh
Prefect of the Hérault Department

As demonstrated by the pandemic, France must regain its health sovereignty.

To succeed, the chain that links human health with that of animals and the planet must be the focus of research focusing on one and the same global health objective:

Feed – Care – Protect,
the 3 great challenges of tomorrow

UNITING FOR INNOVATION

Leveraging work by La FabriK, an agile and innovative co-construction approach, MedVallée wants to **foster cross-fertilization by bringing researchers, academics, business stakeholders, entrepreneurs, institutional bodies, and ordinary citizens into synergy** with support from its cofounders: Montpellier Méditerranée Métropole, the Occitanie Region, and the French State. A complete community of players committed to the same values and common projects to build a worldwide excellence hub.

INNOVATING FOR TRANSFORMATION

MedVallée embodies the alliance of three key excellence sectors – health, the environment, and agriculture/agronomics – present in the Montpellier Métropole area, a true concentration of skills. By promoting interdisciplinarity and knowledge convergence, vectors for innovation, MedVallée will stimulate economic growth and development while attracting investors and businesses. The dynamics are virtuous. That's the MedVallée promise: **to be part of international competition with an expert ecosystem able to meet the challenges of global health by leveraging its ample pool of talents.**

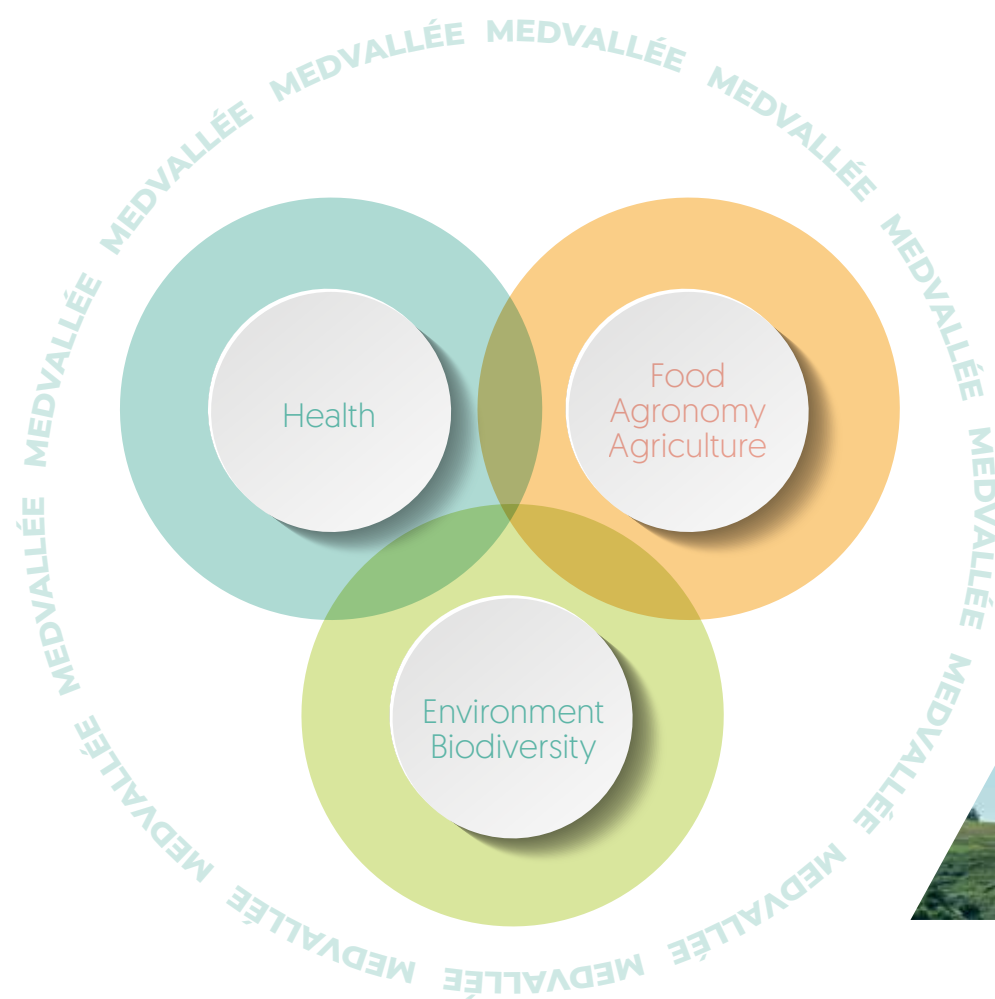
MONTPELLIER,
WORLDWIDE EXCELLENCE HUB
FOR GLOBAL HEALTH



A PROJECT FOR THE TERRITORY

AT THE CROSSROADS OF 3 EXCELLENCE SECTORS:
FOOD / HEALTH / ENVIRONMENT

TO ACHIEVE BETTER GLOBAL HEALTH



FEED – CARE – PROTECT

Montpellier University of Excellence, unites the strengths of 16 institutions around a common goal:

Bring out a thematic research-intensive university in Montpellier that is internationally recognized for its impact in areas related to agriculture, the environment, and health.

1 UNIVERSITY, 10 FRENCH NATIONAL RESEARCH ORGANIZATIONS, 2 SCHOOLS, AND 3 HEALTH ESTABLISHMENTS COMPRISE THE I-SITE EXCELLENCE PROGRAM



UNIVERSITÉ
DE MONTPELLIER



The emergence of the MedVallée project enables University of Montpellier to regain its place in the urban landscape.

François Pierrot
Director, Strategic Investment
Committee,
Vice President, University of Montpellier

MEDVALLÉE OBJECTIVES

- Stimulate **ECONOMIC DEVELOPMENT** and **JOBS** through **INNOVATION**
- Promote the use of technologies involving the **DIGITAL TRANSITION** and **ARTIFICIAL INTELLIGENCE**
- **BOOST THE TERRITORY'S INTERNATIONAL EXPOSURE AND ATTRACTIVENESS**
- Build **high-performance and virtuous INFRASTRUCTURE**: re-balance company establishment in Montpellier's northern area
- Unite players and create interdisciplinary **SYNERGIES** across food, health, and environment sectors
- **Attract and train TALENTS**: anticipate tomorrow's professions
- Involve citizens, particularly on issues concerning prevention and well-being to build an **exemplary GLOBAL HEALTH METROPOLIS**

32,000 students
in health, science,
and technology,
with **8,000**
in health

1,350
researchers

4th leading French
university for life sciences
and medicine ^[1]

6th largest CHU
university hospital in
France ^[2]

ICM – One of the eight Siric ^[3]
institutions in France with
500 clinical practitioners and
researchers

+ 200
companies
representing
7,500
jobs

METROPOLITAN
HEALTH
INNOVATION
PACT, **6 projects**
representing
45 M€
in investment

1/3 of the startups
assisted by Montpellier BIC ^[4]
are involved with health

health

> Eurobiomed competitiveness cluster

[1] QS World University Rankings 2022 – [2] Le Point ranking 2021.
[3] Integrated Cancer Research Site, led by Montpellier Cancer Institute – [4] Business & Innovation Centre.



MedVallée is a wonderful project, and we are contributing to it energetically. Our Group employs more than 6,500 people. We care for more than 70,000 patients every day, that is, more than 25 million per year. We made the decision to keep our headquarters here in Montpellier because we are firmly rooted in this area. ”

Dr. Thomas Hottier
Managing Director of the Inovie Group



INSTITUTE OF REGENERATIVE MEDICINE AND BIOTHERAPY

MONTPELLIER CANCER INSTITUTE (ICM)



NEW FACULTY OF MEDICINE



QUANTUM SURGICAL



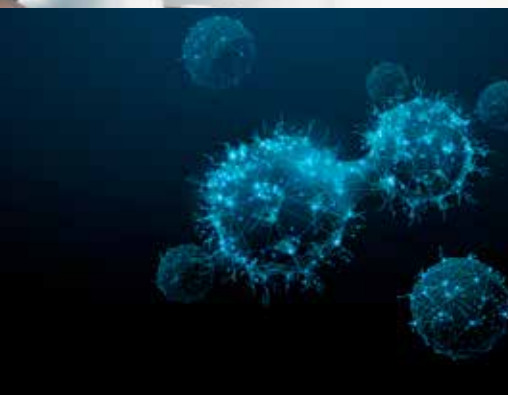
The delay between scientific discoveries and their concrete application to patients is still far too long. Our patients often have to wait years for a new treatment to be introduced. For us, MedVallée represents hope of creating the necessary ecosystem to accelerate research transfer. ”

Marc Ychou
Director of the Montpellier Cancer Institute (ICM)



For innovation to succeed, it must be based on an integrative, participatory, and sustainable approach. The Montpellier CHU university hospital has incorporated this vision into its real estate strategy and its White Paper 2020-2040. The MedVallée project supports this approach completely. It brings together all the players in the various innovation ecosystems and is consistent with the objective of rebalancing city planning policy regarding the northern part of the metropolitan area and major university research and healthcare establishments. For the CHU, it represents a tremendous boost to the site's dynamics. ”

Thomas Le Ludec
Managing Director of the Montpellier CHU



INOVIE



We are a pure product of MedVallée dynamics: a small company founded in Montpellier, born from academic work initiated by Montpellier teams. Phost'in Therapeutics develops small anti-cancer molecules that offer an entirely new mechanism of action, opening up a new avenue for cancer treatment by introducing clinical strategies that are different from those known until now.

And it's happening soon, here in Montpellier. ”

Karine Chorro
CEO of Phost'in



Food Agronomy - Agriculture

Agri Sud-Ouest Innovation competitiveness cluster <

2,800 researchers & professors, including **500** in **60** countries

28 research and training establishments, **15** of which are international

640 farm businesses ON 13,900 HA. OF FARMLAND

60 food transformation companies, **350** jobs ^[1]

60 agro-innovative companies, **950** jobs



[1] Kompas 2019 estimation

With its headquarters in Montpellier, the **CGIAR global consortium** (Consultative Group on International Agricultural Research), coordinates the work of 11 major global centers of the international agricultural research system (10,000 scientists worldwide and a budget of approximately 800 million US dollars). **Its mission is to fight hunger and poverty in the world.**



In the history of mankind, we have never eaten as well as we do now. But at the same time, we have never eaten so poorly. Montpellier has two major assets that are also two tremendous opportunities: first, a community that has developed throughout the 20th century, addressing issues related to agriculture and food, and that is open to the world with leading research and higher education organizations; and second, the I-SITE Excellence Program with its concept of “feed, care, protect.” That is what MedVallée is all about: the ability to tackle agricultural and food issues in relation to environmental, economic, and health issues.

Patrick Caron
Researcher at CIRAD
President of Agropolis International,
Vice President of University of Montpellier,
CGIAR Board Member



ARCAD: THE FIRST BANK FOR THE WORLD OF CULTIVATED PLANTS



MedVallée offers a powerful economic training framework, as well as collective intelligence, allowing us to create synergies and develop opportunities for pooling our efforts to reach international markets.

Dieudonné OkalasOssami
Founder of E-Tumba



Microphyt has benefited from support by the ecosystem in different ways to reach the stage where it is today. That includes Montpellier BIC, Ad'Occ, French Tech, competitiveness clusters, local authorities, and many others. MedVallée is a unique opportunity to bring all of these players together around a common territorial project to become the main point of entry, which is extremely interesting.

Julie Person
Project coordinator and corporate communication for Microphyt



1,300
RESEARCHERS

3rd leading university
worldwide
for ecology ^[1]

**UNESCO International
Center** for water
sciences, with **400
scientists** and **150 PhD
students**

Annual flagship event
in December:
Energaïa

11 SITES
labeled **NATURA 2000**
on **6,830 ha.**, covering
nearly **16%** of the territory

23 RESEARCH
ESTABLISHMENTS

Environment

➤ **Derbi and Aquavalley competitiveness clusters**



MedVallée embodies the area's desire and ambition to be a true pioneer in the field of ecological transition.

We have many strong talents in our local laboratories. When you are the world's leading electrician, you really want to work with the very best in terms of research.

Virginie Monnier-Mangue
Territorial Delegate for EDF Occitanie



In terms of organization, structure, and recognition, water sciences are actually relatively recent in Montpellier. Nevertheless, Montpellier consistently climbs to the top of the most prestigious podiums! 17 laboratories, 400 scientists, and nearly 150 doctoral candidates are united in an international research center created by UNESCO in Montpellier.

Yet another factor bringing substance to MedVallée.

Eric Servat
Director of the International Centre for Interdisciplinary Research on Water Systems Dynamics, ICIReWaRD



Upstream, we are reinforcing our ties with all the professional branches associated with the MedVallée project to adapt our educational offering, as well as to build a strategy based on international academic and higher education pathways to help our young people become the creators, innovators, and entrepreneurs of tomorrow.

Sophie Béjean
Rector of the Montpellier School District,
Rector of the Occitanie Academic Region,
and University Chancellor



Aquatech is a greentech startup, incubated at Montpellier BIC and member of the Aquavalley cluster. Montpellier is strategic because it benefits from a rich ecosystem focusing on water issues, which is why we are here. MedVallée is also a great opportunity to promote companies, extend their reach, and connect with other areas.

Geneviève Marais
CEO of Aquatech Innovation



[1] Shanghai Ranking 2022

METHOD

ESTABLISH AGILE AND UNIFYING GOVERNANCE

PACT > MEDVALLÉE

THE MEDVALLÉE PACT
**is an act of commitment
by founding members:**
French State, Occitanie
Region, and Montpellier
Méditerranée Métropole.

Objectives:

- > Approve the roadmap and action plans, and certify candidate projects meeting the required criteria by awarding them the MedVallée label.
- > Contribute to funding projects with the MedVallée label and mobilize dedicated aid measures, creating a multiplier effect on national and/or European funding.
- > Promote a faster assessment and decision-making process for implementing these projects, in cooperation with the mayors of the concerned member cities.

OPERATIONAL TOOL:

LA FABRIK > MEDVALLÉE

Emblematic of the overall initiative, MedVallée's "La Fabrik" unites the ecosystem's stakeholders, namely researchers, entrepreneurs, institutions, and economic partners, who join together in workshops to build MedVallée.

> The first phase consisted of six workshops on several topics: **synergies and collective intelligence; higher education and research; creating and developing companies; property and real estate; talent, jobs, and skills; tomorrow's professions;** and national and international exposure.

> Over **250 participants demonstrated** their commitment to the project by taking the initiative to share ideas.

> An intermediary report identified five strategic areas: a certified community, MedVallée as a catalyst for growth and development, innovation as its DNA, a showcase city and territory, and national and global presence.

> A second phase with **five workshops to go deeper into each area** and priority issues led to the **elaboration of a preliminary, detailed action plan.**

> A third phase enabled the teams to **fine-tune the strategy and action plan for 2022-2026.**

> MEDVALLÉE's LA FABRIK,
**co-construction as a
lever for success**

MEDVALLÉE, A PROJECT FOR THE TERRITORY THAT LEVERAGES A DYNAMIC ECOSYSTEM CENTERED IN MONTPELLIER'S NORTHERN AREA

RESEARCH CENTERS – UNIVERSITIES – CLUSTERS

UNIVERSITY / FACULTY - RESEARCH CENTERS INCUBATORS AND OFFICE CENTERS

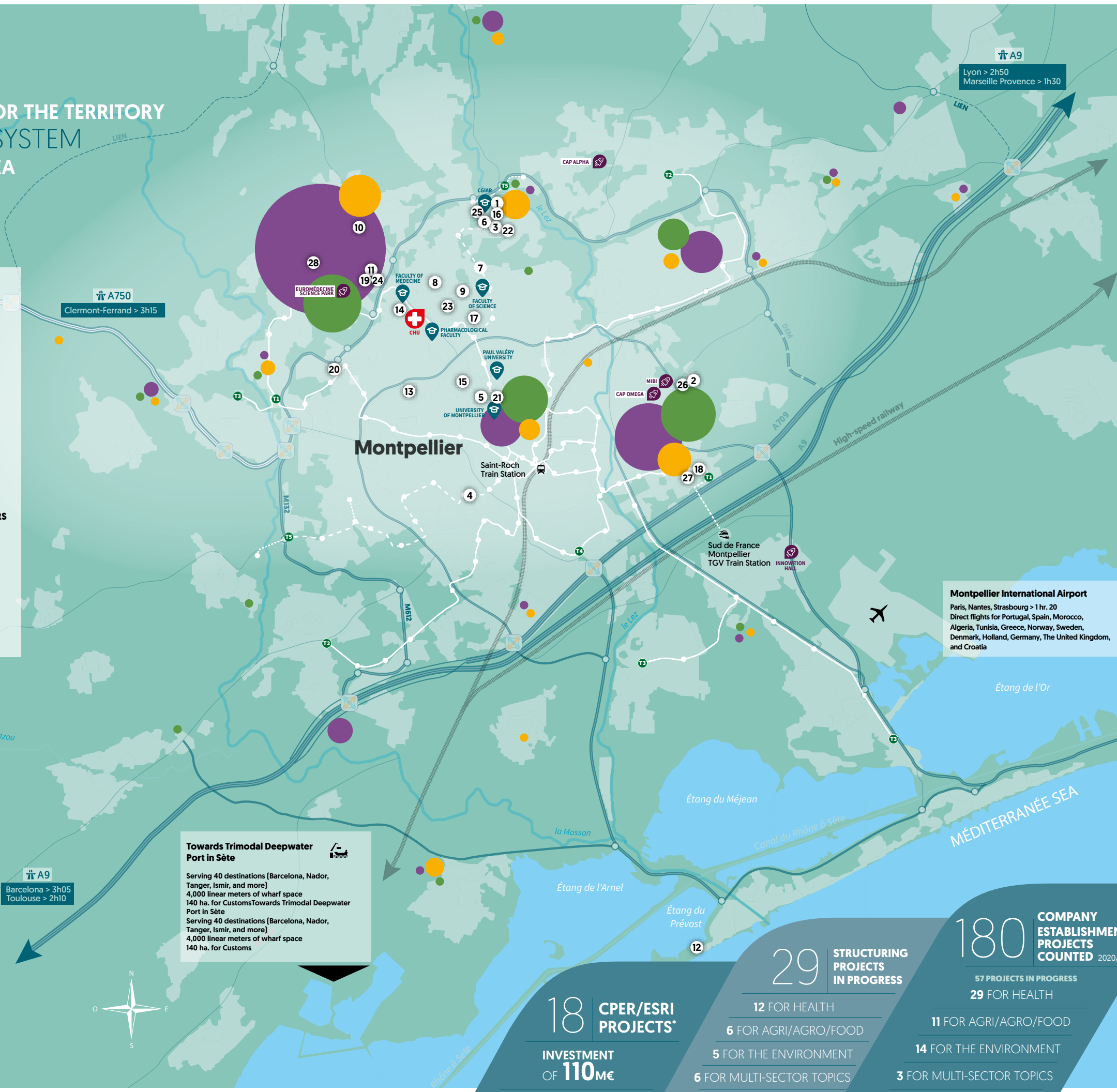
- | | | |
|---|---|---|
| 1 Agropolis International | 10 ICM – Montpellier Cancer Institute | 18 Leader Montpellier |
| 2 BIOMED Alliance | 11 IES – Institute of Electronics and Systems | 19 LIRMM – Montpellier Laboratory of Computer Science, Robotics, and Microelectronics |
| 3 CEFE – Center for Functional and Evolutionary Ecology | 12 IFREMER – French Research Institute for Exploitation of the Sea | 20 Montpellier Business School |
| 4 CEMATER – Positive energy cluster | 13 INRAE – National Research Institute for Agriculture, Food, and the Environment | 21 Montpellier University of Excellence |
| 5 UNESCO ICiReWaRD center | 14 INSERM – National Institute of Health and Medical Research | 22 Occitanum - Digitag |
| 6 CIRAD – International Cooperation Center for Agronomic Research and Development | 15 INSTITUT AGRO | 23 Polytech Montpellier |
| 7 CNRS – National Center for Scientific Research | 16 IRD – Research Institute for Development | 24 SATT AxLR |
| 8 ENSAM – Montpellier National Higher School of Architecture | 17 IRMB – Institute of Regenerative Medicine and Biotherapies | |
| 9 ENSCM – Montpellier National Higher School of Chemistry | | |

COMPETITIVENESS CLUSTERS

- 25 Agri Sud-Ouest Innovation
- 26 Aqua-Valley
- 27 DERBI
- 28 Eurobiomed

ECONOMIC STAKEHOLDERS BY SECTOR

Health Agriculture-Agronomics Environment



Montpellier International Airport
Paris, Nantes, Strasbourg > 1 hr. 20
Direct flights for Portugal, Spain, Morocco, Algeria, Tunisia, Greece, Norway, Sweden, Denmark, Holland, Germany, The United Kingdom, and Croatia

Towards Trimodal Deepwater Port in Sète
Serving 40 destinations (Barcelona, Nador, Tanger, Ismir, and more)
4,000 linear meters of wharf space
140 ha. for Customs
Towards Trimodal Deepwater Port in Sète
Serving 40 destinations (Barcelona, Nador, Tanger, Ismir, and more)
4,000 linear meters of wharf space
140 ha. for Customs



18 CPER/ESRI PROJECTS*
INVESTMENT OF 110M€

29 STRUCTURING PROJECTS IN PROGRESS
12 FOR HEALTH
6 FOR AGRI/AGRO/FOOD
5 FOR THE ENVIRONMENT
6 FOR MULTI-SECTOR TOPICS

180 COMPANY ESTABLISHMENT PROJECTS COUNTED 2020/2024
57 PROJECTS IN PROGRESS
29 FOR HEALTH
11 FOR AGRI/AGRO/FOOD
14 FOR THE ENVIRONMENT
3 FOR MULTI-SECTOR TOPICS

This map is non-contractual and non-exhaustive.

* State-Region Plan Contract / Higher Education Research and Innovation



MEDVALLÉE
MONTPELLIER

Inventing **the future here**

MONTPELLIER MÉDITERRANÉE MÉTROPOLÉ
50 PLACE ZEUS, 34000 MONTPELLIER, FRANCE

MedVallée Team

medvallee.fr

